

How to network the AstroChart software

When using multiple computers connected to a main server, you can network the AstroChart. Some advantages of networking include: having all User Notes on the main server (therefore available from all computers) and the need to update the main server only. **Important: when you run the Updates, all AstroCharts on all computers must be closed.**

To do this, you will need to be logged as computer administrator.

Step 1:

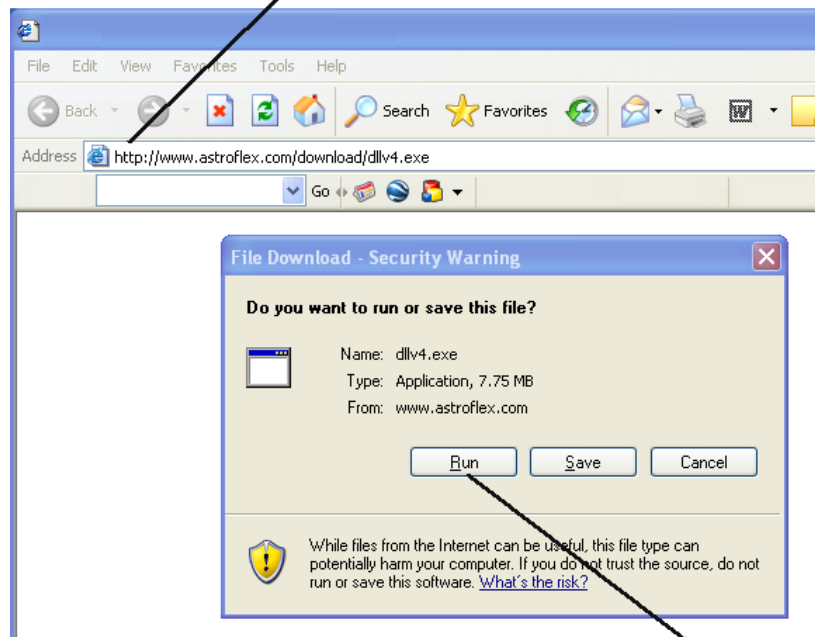
First, you need to download and install a file to every computer that will have the AstroChart. Here is the address link you need to type into an Internet Explorer page.

<http://www.astroflex.com/download/dllv4.exe>

Open any web page with **Internet Explorer**

Enter the link into the address box and press **Enter** on the keyboard

Image 1



Then click on Run

When the file is downloaded, follow the install instructions. You have to do this to every computer except for the main server.

How to network the AstroChart software

Step 2:

When all computers have gone through step 1, go back to the main server and install the AstroChart CD or DVD. If you are installing from CDs, you will have to switch CD 1 for CD 2 which contains the Archives. Before you remove the first CD, make sure that you click **finish** on the install screen of the first CD to clear the screen. This should take you back to the desktop. Then, put in CD 2. With the DVD it is easier, just let it run and it will install everything you need to the computer.

Step 3:

Once the AstroChart is installed, you have to share the Astro folder. To get to the folder shown on the diagram 2, double-click on the icon <<My Computer>> from the desktop. Then double-click on <<C Drive>>, double-click on <<Program Files>> and see diagram 3.

Image 2

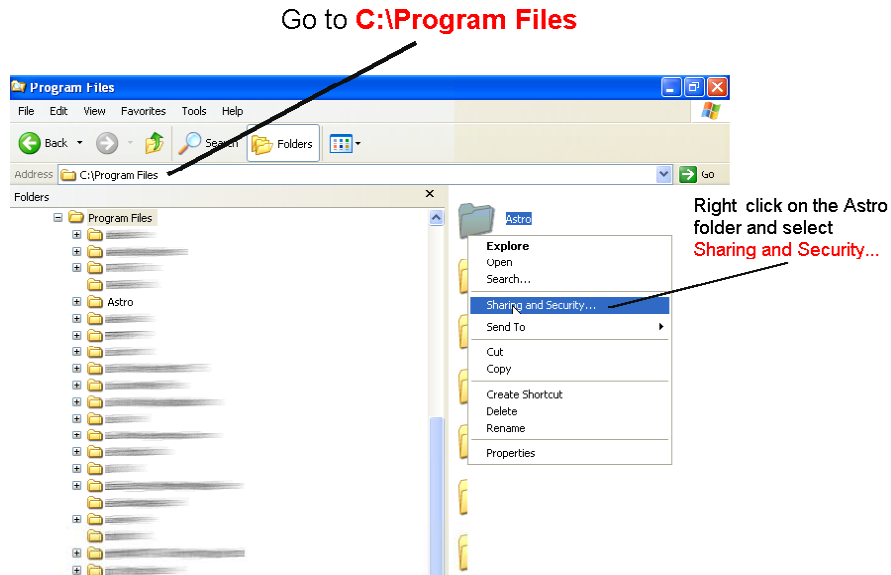
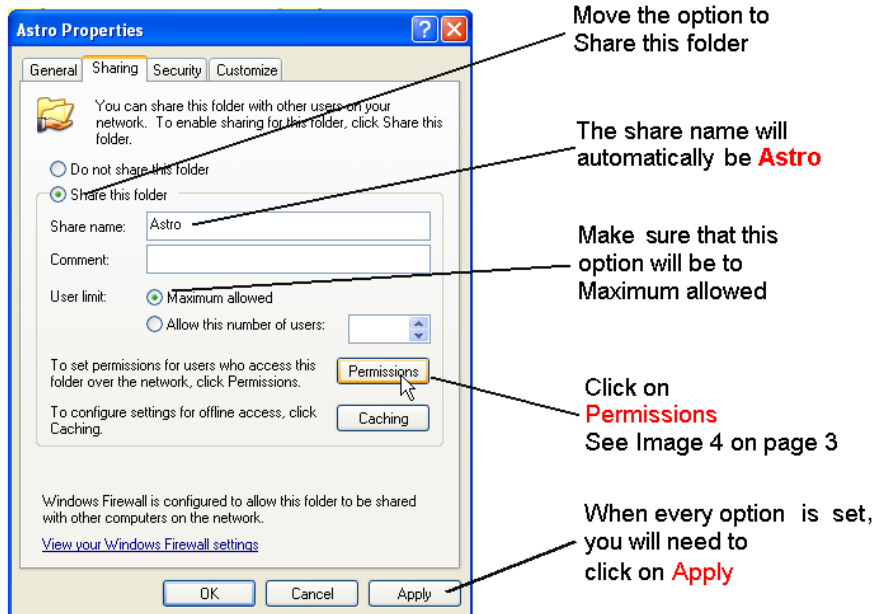


Image 3



How to network the AstroChart software

The sharing option is important, all users need to have full control to the folder. With some servers, folders that are in <<Program Files>> cannot be shared with the **Full Control** option. If that is the case with your system, you will need to move the Astro folder out of the <<Program Files>> folder and into a different sub-folder.

Example 1: C:\Astro\Astro\
Example 2: D:\Astro\Astro\

First, you have to create an Astro sub-folder and move the Astro folder from <<Program Files>> to it. The shared Astro folder is the one indicated in red in the examples.

This is the what you will see when you click on the Permission button (See image 3)

Image 4

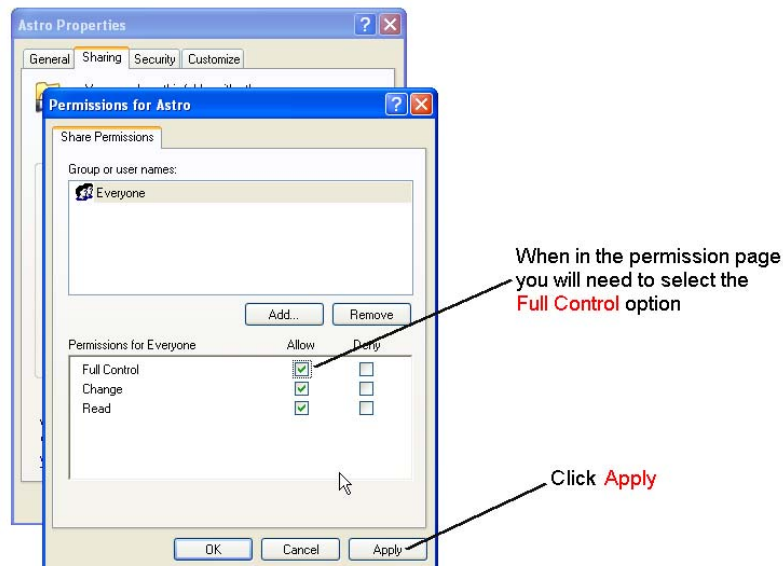
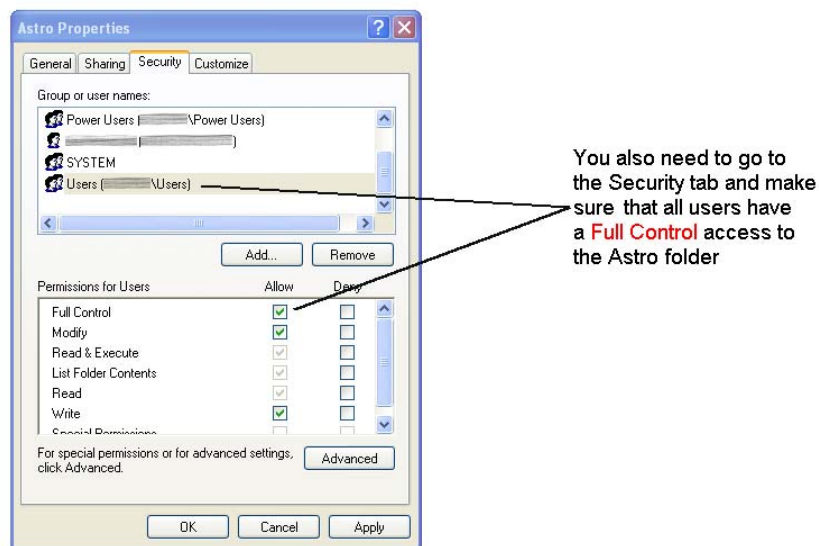


Image 5



This would complete Step 3 and all server works. Now proceed with the other computers on which you have previously installed the file from the web page (Step 1).

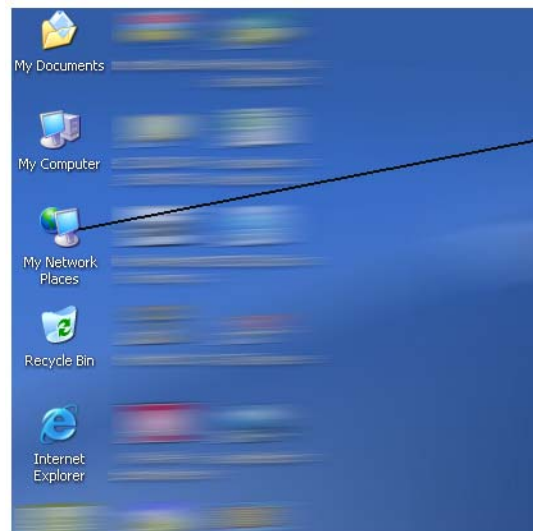
How to network the AstroChart software

Step 4:

The following steps are done on the other computers.

From the desktop, double-click on the icon << *My Network Places* >>.

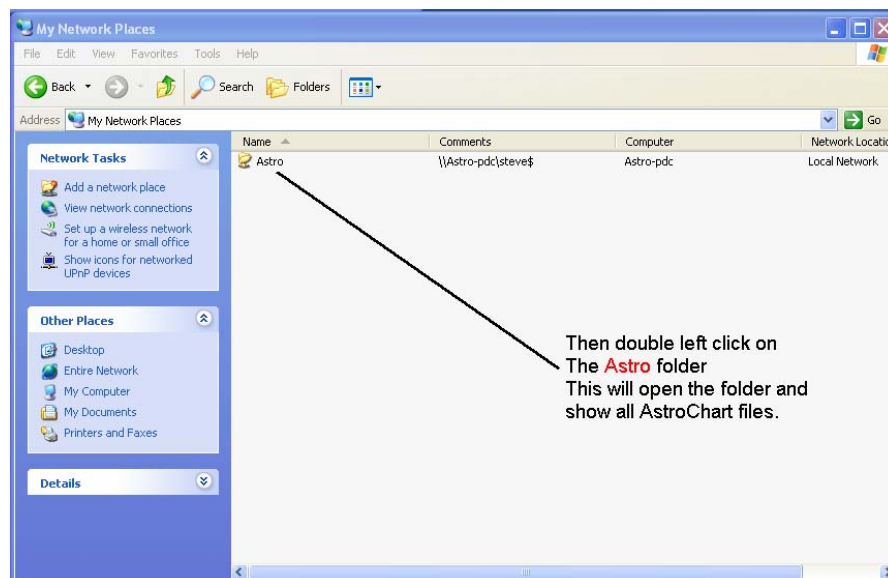
Image 6



Then click on the icon
My Network Places
from the desktop

Now the Astro folder should show-up in the list of network shared items. Follow instructions on the diagrams.

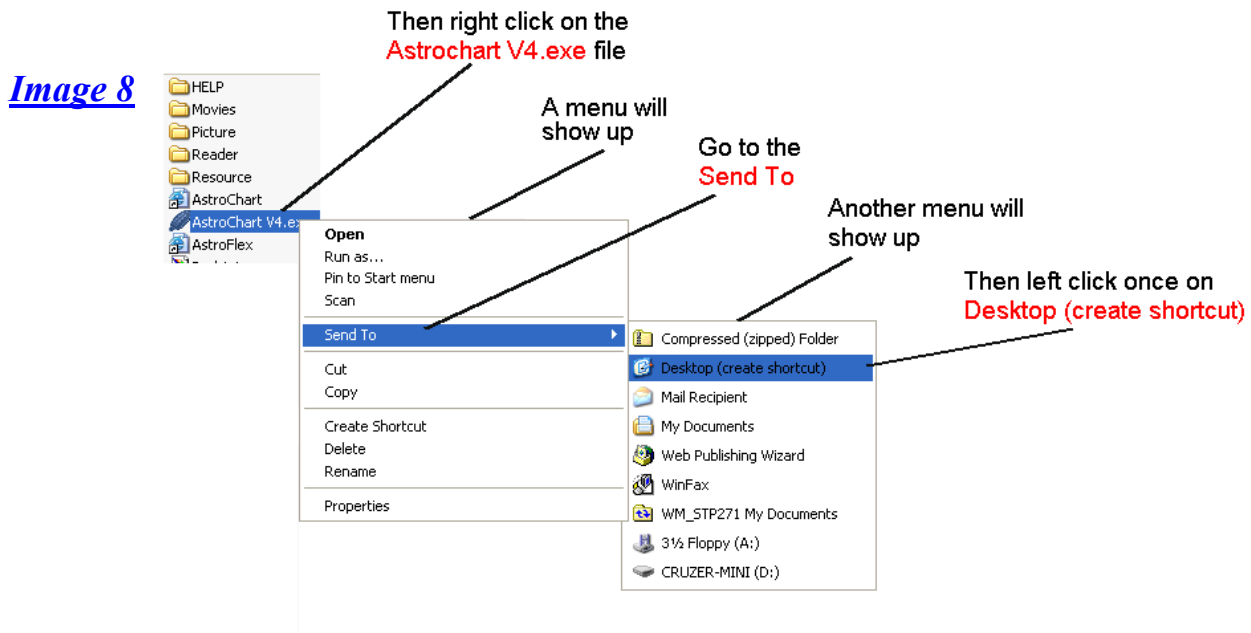
Image 7



Then double left click on
The Astro folder
This will open the folder and
show all AstroChart files.

How to network the AstroChart software

When you have double-clicked on the Astro folder, you will see all AstroChart files. Locate the files named << **AstroChart V4.exe** >> and follow steps on diagram 8



This step has to be done on all computers that will run the AstroChart

Now, on the desktop, you should have an AstroChart icon. Double-click to run the program. The AstroChart will load.

If you do not see the icon or if anything happens such as the program not loading, see your permissions and access rights (**Step 3**) and make sure that you have **full control** of the network Astro folder.

One way to see if every thing is ok is to save user notes to a car, go to another car and then return to the car for which you saved the user notes to and see if they were saved.

Do not forget:

When you run the Updates, all AstroCharts on all computers must be closed.